

# FLOURISHING NEIGHBORHOOD INDEX (FNI)

## COLLEGE HILL NEIGHBORHOOD — CLEVELAND, TN

Presented by City Fields in partnership with The Lupton Center

### OVERVIEW OF THE FNI

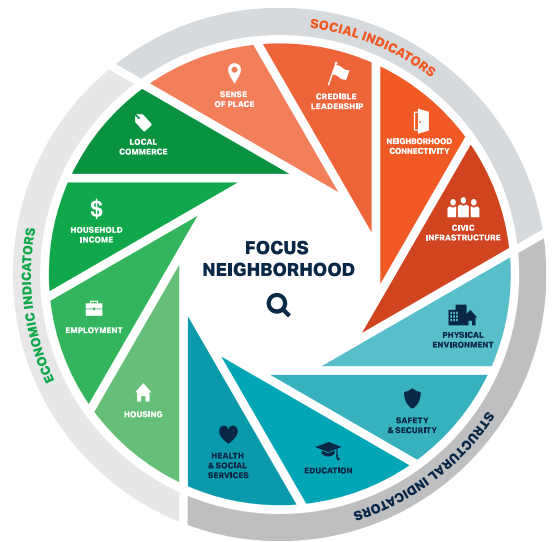
The Flourishing Neighborhood Index (FNI) is a comprehensive engagement and assessment process that provides meaningful data for organizations as they endeavor to develop stronger communities. The FNI is designed to help organizations better understand the communities they serve, as well as build power and engage residents.

#### Three distinct components make up the FNI:

1. A survey of every parcel of land in the area;
2. A neighbor survey administered to at least ten percent of households; and
3. Baseline measurements drawn from publicly accessible data.

Together these pieces enable organizations to clearly see the geography of their place, listen deeply to community residents, and, over time, tell a story about structural, social, and economic changes that are taking place in their neighborhood.

The FNI was conducted in the College Hill neighborhood by City Fields and their partners in the summer and fall of 2022.



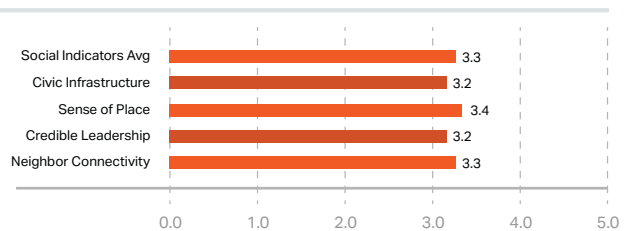
### College Hill Scores

The overall neighborhood health score for College Hill was **3.4**, on a scale of 1 to 5.

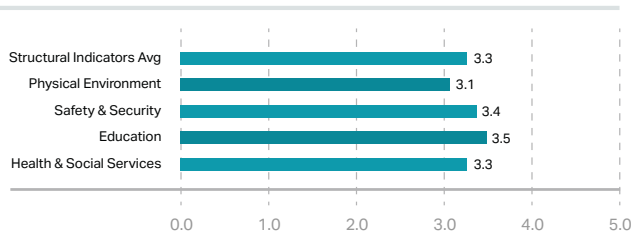
This score, the average of all 12 indicators, tells us that stable foundational systems exist in the College Hill community, and there is opportunity to build upon them.



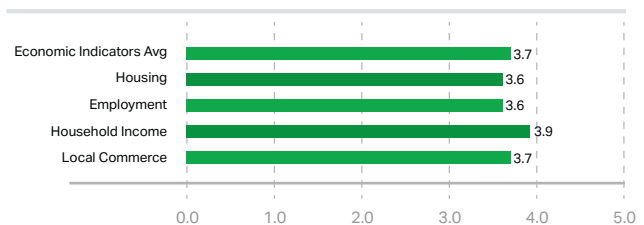
#### Social Indicators



#### Structural Indicators



#### Economic Indicators



# KEY FINDINGS

1



## KEY FINDING #1: Physical Environment

At **3.1**, the physical environment indicator had the lowest score within the FNI. Respondents expressed concern for sidewalk conditions, street lighting, trash, and lack of maintenance on neighborhood lots, including parks. Strong partnerships with city departments and the neighborhood association could help address many of these concerns.

2



## KEY FINDING #2: Housing

At **3.6**, housing was the third highest scoring indicator. There was consensus among surveyors that property values are increasing in College Hill. Residents value a variety of housing options and most are satisfied with the current mix of housing. However, with recent closures of public housing properties, this is an area to continue monitoring.

3



## KEY FINDING #3: Social Cohesion and Civic Organizations

As a whole, the Social category scored **3.3**, the lowest of the three categories. One reason for this low score could be COVID-19 related. There was sentiment from residents that they were unsure of who local leaders are or how to access them.

However, questions around connectivity between neighbors and the effectiveness of civic organizations scored high.

Overall, there is cause to explore ways to further strengthen relationships between neighbors and community leadership, but it appears that a solid foundation of care and concern exists among residents in the College Hill community.